

MOUSE IgG1 SPARCL™ ASSAY

Life Diagnostics, Inc., Catalog Number: IGG1-SP-1

PRINCIPLE OF THE ASSAY

The mouse IgG1 SPARCL™¹ (Spatial Proximity Analyte Reagent Capture Luminescence, ref 1) assay uses two affinity purified IgG μ -chain specific antibodies. An antibody that recognizes all mouse IgG subclasses is conjugated to horseradish peroxidase (HRP). An antibody that specifically recognizes mouse IgG1 is conjugated to acridan, a chemiluminescent substrate. When HRP and acridan conjugated antibodies bind to IgG1 they are brought into close proximity. With the addition of hydrogen peroxide, HRP catalyzes oxidation of proximal acridan molecules causing a flash of chemiluminescence. Acridan conjugated antibodies distant from HRP produce no signal. This principle allows the development of a homogeneous assay that allows rapid determination of IgG1 concentrations.

The HRP and acridan conjugated antibodies provided with the kit are mixed with standards and diluted samples in wells of the 96-well white SPARCL™ plate provided with the kit². After incubation for 30 minutes on a shaker at 25°C and 150 rpm, the plate is placed into a luminometer. Trigger solution containing hydrogen peroxide is injected into each well and luminescence is immediately measured. The concentration of IgG1 is proportional to luminescence and is derived from a standard curve.

Because the mouse IgG1 SPARCL assay uses a homogenous format, a prozone or hook effect occurs at high IgG1 concentrations. For this reason, serum or plasma samples should initially be tested at dilutions of 20,000 fold. When measuring IgG1 in other biological fluids or extracts, samples should be tested at a series of dilutions in order to ensure that false low values are not obtained due to either prozone or matrix effects.

MATERIALS AND COMPONENTS

Materials provided with the kit:

- Anti-mouse IgG1 HRP stock **Store $\leq -70^{\circ}\text{C}$**
- Anti-mouse IgG1 acridan stock **Store $\leq -70^{\circ}\text{C}$**
- IgG1 stock **Store $\leq -70^{\circ}\text{C}$**
- Diluent; CSD50-1, 2 x 50 ml
- Trigger solution; TS7-1, 7 ml
- White SPARCL™ plate (12 x 8-well)
- Clear untreated 96-well plate

Materials required but not provided:

- Precision pipettes and tips
- Polypropylene microcentrifuge tubes
- Vortex mixer
- Plate incubator/shaker
- Luminometer capable of simultaneous injection/measurement
- Curve fitting software

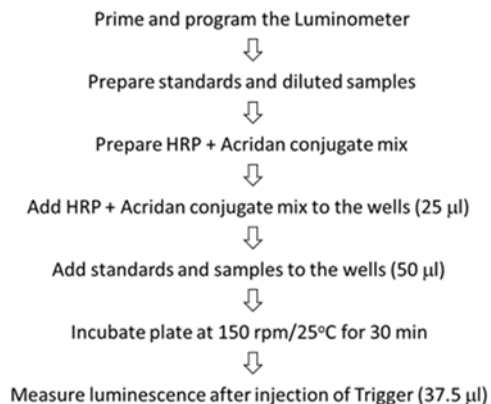
STORAGE

Store the HRP conjugate, acridan conjugate and IgG1 stock at or below -70°C . The remainder of the kit should be stored at 2-8°C. The SPARCL™ plate should be kept in a sealed bag with desiccant and antioxidant. The kit will remain stable for at least six months from the

date of purchase, provided that the components are stored as described.

GENERAL INSTRUCTIONS

1. Please take the time to completely read all instructions before starting your assay. Contact us if you need clarification.
2. All reagents used in the assay should be allowed to reach room temperature (25°C) before use.
3. It is important that standards and samples be added to the SPARCL™ plate quickly. If testing large numbers of samples, rather than pipetting standards and samples directly into the white SPARCL™ plate using a single channel pipettor, we recommend the following. First, pipette an excess volume of standards and samples into appropriate wells of the clear 96-well plate. Then use an 8- or 12-channel multipipettor to quickly and efficiently transfer 50 μl aliquots to the appropriate wells of the white SPARCL™ plate. The wells of the clear plate hold a maximum volume of 300 μl .
4. Follow the sequence of events below when running the assay.



STANDARD PREPARATION

The IgG1 stock is comprised of BALB/c mouse serum of known IgG1 concentration diluted in a carrier protein matrix³.

1. Thaw the IgG1 stock shortly before use.
2. Label 8 polypropylene tubes as 100, 50, 25, 12.5, 6.25, 3.13, 1.56 and 0.78 ng/ml.
3. Into the tube labeled 100 ng/ml, pipette the volume of diluent detailed on the stock vial label. Then add the indicated volume of stock and mix gently. This provides the 100 ng/ml standard.
4. Dispense 150 μl of diluent into the tubes labeled 50, 25, 12.5, 6.25, 3.13, 1.56 and 0.78 ng/ml.
5. Pipette 150 μl of the 100 ng/ml IgG1 standard into the tube labeled 50 ng/ml and mix. This provides the 50 ng/ml IgG1 standard.
6. Similarly prepare the remaining standards by two-fold serial dilution.

If future use of the IgG1 stock is intended, it should be stored frozen at or below -70°C .

¹ The SPARCL™ technology was developed by Lumigen Corp.

² The white SPARCL™ plate provided with the kit has been treated with a reagent that reduces background chemiluminescence. Untreated plates cannot be used.

³ The IgG1 concentration was determined using pure mouse IgG1 from Southern Biotech as reference material.

SAMPLE PREPARATION

As measured with the mouse IgG1 SPARCL™ assay, we found IgG1 levels of 182±139 µg/ml (mean±SD, n=6, range = 24 to 439 µg/ml) in BALB/c mouse serum. In order to obtain values within range of the standard curve we suggest that samples initially be tested at a dilution of 20,000 fold. This can be accomplished as follows.

1. For each sample to be tested, dispense 495 µl and 497.5 µl of diluent into separate tubes.
2. Aliquot 5.0 µl of serum or plasma into the first tube and mix to give a 100-fold dilution.
3. Mix 2.50 µl of the 100-fold diluted sample with 497.5 µl of diluent in the second tube to give a 20,000-fold dilution.

CONJUGATE MIX PREPARATION

Instructions for preparation of the conjugate mix are detailed on the box that contains the HRP and acridan conjugates. Prepare the mix shortly before use using the diluent provided with the kit.

LUMINOMETER SETUP

1. The luminometer must be capable of injection and simultaneous measurement of luminescence without any delay.
2. Prime the luminometer injection port with at least 1 ml of trigger solution.
3. Place the injection needle into the injection port, (necessary for BMG luminometers).
4. Program the luminometer to inject 37.5 µl of trigger solution per well and to measure from time zero for 1 second (50 x 0.02 second intervals).
5. Define the format of the assay using the luminometer software.
6. Because the white SPARCL™ plate is provided as a 12 x 8-well strips, allowing use of fewer than 96-wells, make sure that the luminometer is programmed to inject trigger solution only into the wells being used.
7. We use a BMG LUMIstar Omega set at a gain of 3600. Optimal gain should be determined by the end user.
8. There are a number of manufacturers of luminometers that are equipped to run a SPARCL™ assay. Please contact Life Diagnostics or Lumigen (www.lumigen.com) to discuss your luminometer.

PROCEDURE

1. Before starting the assay ensure that the luminometer is primed with trigger solution and that the injection needle is positioned in the injection port.
2. Secure the desired number of SPARCL™ 8-well strips in the holder. Immediately seal unused strips in the resealable bag with desiccant and antioxidant. Store unused strips at 2-8°C.
3. Aliquot 25.0 µl of conjugate mix into each well.
4. Dispense 50.0 µl of standards and diluted samples into the wells (we recommend that standards and samples be tested in duplicate).
5. Incubate on an orbital micro-plate shaker at 150 rpm and 25°C for 30 minutes.
6. After the 30-minute incubation, place the plate in the luminometer and measure luminescence after injection of trigger solution (37.5 µl).
7. Remove the plate from the luminometer and discard the used strips. Keep the plate frame if future use is intended.

CALCULATION OF RESULTS

1. Before calculating results, review the raw data. If artefacts (RLU spikes) are apparent immediately after injection of trigger

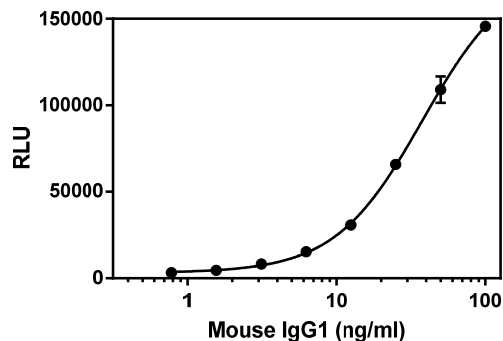
solution, eliminate that portion of the luminescence profile from analysis for all wells. We routinely use the sum of RLU values from a 100-980 ms data collection window.

2. Determine the sum of RLU values within the data collection window for the standards and samples.
3. Using graphing software, construct a standard curve by plotting the sum of the RLU values for the standards versus the log₁₀ of the IgG1 concentration and fit to a sigmoidal, 4PL model.
4. Derive the corresponding concentration of IgG1 in the samples from the standard curve (remember to derive the concentration from the antilog).
5. Multiply the derived concentration by the dilution factor to determine the concentration of IgG1 in the original sample.
6. If the sum of the RLU values of diluted samples fall outside the standard curve, samples should be appropriately diluted and re-tested.

TYPICAL STANDARD CURVE

A typical standard curve with the sum of RLU plotted on the Y-axis versus log₁₀ IgG1 concentrations on the X-axis is shown below. This curve is for illustration only and should not be used to calculate unknowns. A standard curve must be run with each experiment.

IgG1 (ng/ml)	RLU
100	145729
50	109123
25	65801
12.5	30766
6.25	15291
3.13	8126
1.56	4512
0.78	3130



REFERENCES

1. Akhavan-Tafti H. et al. A homogeneous chemiluminescent immunoassay method. J Am Chem Soc. 20;135(11):4191-4 (2013)

Rev 022118

For technical assistance please email us at techsupport@lifediagnosics.com