

CHICKEN α -1-ACID GLYCOPROTEIN (AGP) SPARCL™ ASSAY

Life Diagnostics, Inc., Catalog Number: AGP-SP-5

INTRODUCTION

AGP is a highly glycosylated ~40 kDa acute phase protein that is elevated in chicken plasma after injury, infection or disease. Takahashi, et al. (ref 1) demonstrated a 4.5-fold increase of AGP in plasma after injection of chickens with lipopolysaccharide.

PRINCIPLE OF THE ASSAY

The chicken AGP SPARCL™¹ (ref 2) assay uses two chicken AGP-specific antibodies; the same pair used in our chicken AGP ELISA kit (AGP-5). One is conjugated to horseradish peroxidase (HRP), the other is conjugated to acridan, a chemiluminescent substrate. When the HRP and acridan conjugated antibodies bind to AGP they are brought into close proximity. With the addition of hydrogen peroxide, HRP catalyzes oxidation of proximal acridan molecules causing a flash of chemiluminescence. Acridan conjugated antibodies distant from HRP produce no signal. This principle allows the development of a homogeneous assay that allows rapid measurement of AGP concentrations.

The HRP and acridan conjugated antibodies provided with the kit are mixed with standards and diluted samples in wells of the 96-well SPARCL™ plate provided with the kit². After incubation for 30 minutes on a shaker at 25°C and 150 rpm, the plate is placed into a luminometer. Trigger solution containing hydrogen peroxide is injected into each well and luminescence is immediately measured. The concentration of AGP is proportional to luminescence and is derived from a standard curve.

MATERIALS AND COMPONENTS

Materials provided with the kit:

- Anti-AGP HRP conjugate **Store \leq -70°C**
- Anti-AGP acridan conjugate **Store \leq -70°C**
- AGP stock **Store \leq -70°C**
- Diluent; CAGPD50-1, 50 ml
- Trigger solution; TS7-1, 7 ml
- White SPARCL™ plate (12 x 8-well)
- Clear untreated 96-well plate

Materials required but not provided:

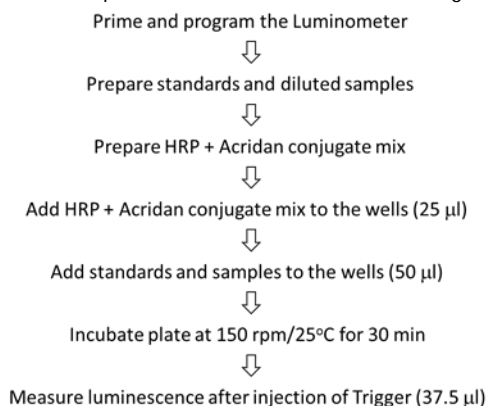
- Precision pipettes and tips
- Polypropylene microcentrifuge tubes
- Vortex mixer
- Plate incubator/shaker
- Luminometer capable of simultaneous injection/measurement
- Graphing software

STORAGE

Store the HRP conjugate, acridan conjugate and AGP stock at -70°C (they may be stored at -20°C for one week). The remainder of the kit should be stored at 2-8°C. The SPARCL™ plate should be kept in a sealed bag with desiccant and antioxidant. The kit will remain stable for at least six months from the date of purchase, provided that the components are stored as described.

GENERAL INSTRUCTIONS

1. Please take the time to completely read all instructions before starting your assay. Contact us if you need clarification.
2. All reagents used in the assay should be allowed to reach room temperature (25°C) before use.
3. It is important that standards and samples be added to the SPARCL™ plate quickly. If testing large numbers of samples, rather than pipetting standards and samples directly into the white SPARCL™ plate using a single channel pipettor, we recommend the following. First, pipette an excess volume of standards and samples into appropriate wells of the clear 96-well plate. Then use an 8- or 12-channel multipipettor to quickly and efficiently transfer 50 μ l aliquots to the appropriate wells of the white SPARCL™ plate. The wells of the clear plate hold a maximum volume of 300 μ l.
4. Follow the sequence of events below when running the assay.



STANDARD PREPARATION

The chicken AGP stock is comprised of pure chicken AGP in a carrier protein matrix. Thaw the stock shortly before use.

1. Label 8 polypropylene tubes as 100, 50, 25, 12.5, 6.25, 3.13, 1.56 and 0 ng/ml.
2. Into the tube labeled 100 ng/ml, pipette the volume of diluent detailed on the stock vial label. Then add the indicated volume of stock and mix gently. This provides the 100 ng/ml standard.
3. Dispense 150 μ l of diluent into the tubes labeled 50, 25, 12.5, 6.25, 3.13, 1.56 and 0 ng/ml.
4. Pipette 150 μ l of the 100 ng/ml AGP standard into the tube labeled 50 ng/ml and mix. This provides the 50 ng/ml AGP standard.
5. Similarly prepare the 25, 12.5, 6.25, 3.13 and 1.56 standards by two-fold serial dilution.

Use the standards within one hour of preparation.

SAMPLE PREPARATION

Plasma should be prepared as quickly as possible after blood collection. If samples cannot be assayed immediately they should be frozen at or below -20°C. Avoid repeated freeze-thaws.

¹ The SPARCL™ (Spatial Proximity Analyte Reagent Capture Luminescence) technology was developed by Lumigen Corp.

² The plate provided with the kit has been treated with a reagent that reduces background chemiluminescence. Untreated plates cannot be used.

The chicken AGP SPARCL™ assay uses a homogeneous format and is therefore susceptible to a prozone or “hook effect” at high AGP concentrations.

In studies at Life Diagnostics, we found AGP levels of 181±57 µg/ml (mean ± SD, n=6) in healthy chicken plasma. If samples were tested a dilution of 8,000-fold or greater, prozone and matrix effects were avoided. We recommend that samples initially be tested at a dilution of 16,000-fold:

1. For each sample to be tested, dispense 198 µl and 318 µl of diluent into separate tubes.
2. Pipette and mix 2.0 µl of sample into the tube containing 198 µl of diluent. This provides a 100-fold dilution.
3. Mix 2.0 µl of the 100-fold diluted sample with the 318 µl of diluent in the second tube. This provides a 16,000-fold dilution.

CONJUGATE MIX PREPARATION

Instructions for preparation of the conjugate mix are detailed on the box that contains the HRP and acridan conjugates. If necessary, after thawing, briefly centrifuge to ensure that the contents are at the bottom of the tubes. Prepare the mix shortly before use using the diluent provided with the kit.

LUMINOMETER SETUP

1. The luminometer must be capable of injection and simultaneous measurement of luminescence without any delay.
2. Prime the luminometer injection port with 1 ml of trigger solution.
3. Place the injection needle into the injection port as needed for BMG luminometers.
4. Program the luminometer to inject 37.5 µl of trigger solution per well and to measure from time zero for 1 second (50 x 0.02 second intervals).
5. Define the format of the assay using the luminometer software.
6. Because the white SPARCL™ plate is provided as a 12 x 8-well strips, allowing use of fewer than 96-wells, make sure that the luminometer is programmed to inject trigger solution only into the wells being used.
7. We use a BMG LUMIstar Omega set at a gain of 3600. Optimal gain should be determined by the end user.
8. There are a number of manufacturers of luminometers that are equipped to run a SPARCL™ assay. Please contact Life Diagnostics or Lumigen (www.lumigen.com) to discuss your luminometer.

PROCEDURE

1. Before starting the assay ensure that the luminometer is primed with trigger solution and that the injection needle is positioned in the injection port.
2. Secure the desired number of SPARCL™ 8-well strips in the holder. Immediately seal unused strips in the resealable bag with desiccant and antioxidant. Store unused strips at 2-8°C.
3. Aliquot 25.0 µl of conjugate mix into each well.
4. Dispense 50.0 µl of standards and diluted samples into the wells (we recommend that standards and samples be tested in duplicate).
5. Incubate on an orbital micro-plate shaker at 150 rpm 25°C for 30 minutes.
6. After the 30-minute incubation, place the plate in the luminometer and measure luminescence after injection of trigger solution (37.5 µl).
7. Remove the plate from the luminometer and discard the used strips. Keep the plate frame if future use is intended.

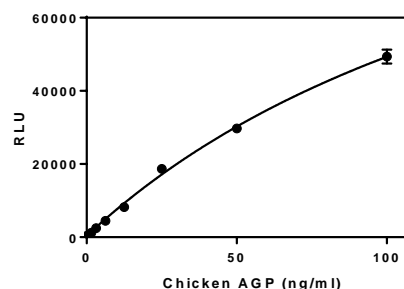
CALCULATION OF RESULTS

1. Before calculating results, review the raw data. If artefacts (RLU spikes) are apparent immediately after injection of trigger solution, eliminate that portion of the luminescence profile from analysis for all wells. We routinely use the sum of RLU values from a 100-980 ms data collection window.
2. Determine the sum of RLU values within the data collection window for the standards and samples.
3. Using graphing software, construct a standard curve by plotting the sum of the RLU values for the standards versus the AGP concentration and fit to single site, total and nonspecific binding model.
4. Derive the concentration of AGP in the samples from the standard curve.
5. Multiply the derived concentration by the dilution factor to determine the concentration of AGP in the original sample.
6. If the sum of the RLU values of diluted samples fall outside the standard curve, samples should be appropriately diluted and re-tested.

TYPICAL STANDARD CURVE

A typical standard curve with the sum of RLU plotted on the Y-axis versus AGP concentrations on the X-axis is shown below. This curve is for illustration only and should not be used to calculate unknowns.

AGP(ng/ml)	RLU
100	49386
50	29710
25	18670
12.5	8237
6.25	4485
3.13	2456
1.56	1238
0	372



REFERENCES

1. Takahashi K. et al. Effect of dietary protein concentration on responses to Escherichia coli endotoxin in broiler chickens. *British Journal of Nutrition*. 74:173-182 (1995)
2. Akhavan-Tafti H. et al. A homogeneous chemiluminescent immunoassay method. *J Am Chem Soc*. 20;135(11):4191-4 (2013)

Rev 041719

For technical assistance please email us at techsupport@lifediagnosics.com