

# PROTEINS



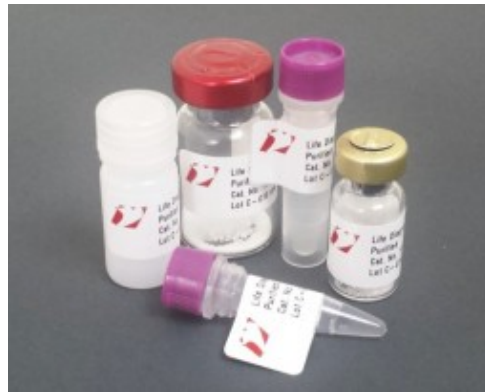
## COW SERUM AMYLOID A, 9007

Serum amyloid A (SAA) is a positive acute phase reactant that is synthesized...

**SKU:** 9007

**Price:** \$500.00 - \$2,000.00

**Categories:** [Acute Phase Biomarkers](#), [Proteins](#)



## CAT LRG1 (100 UG), 9060

The polypeptide chain of human LRG1 (leucine rich alpha 2 glycoprotein-1)...

**SKU:** 9060

**Price:** \$500.00

**Categories:** [Acute Phase Biomarkers](#), [Proteins](#)



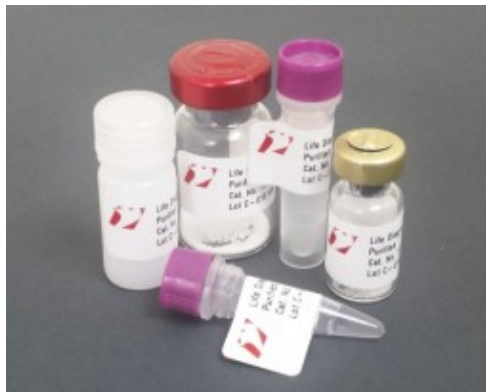
## HUMAN LRG1, 9050

The polypeptide chain of human LRG1 (leucine rich alpha 2 glycoprotein-1)...

**SKU:** 9050

**Price:** \$250.00 - \$2,000.00

**Categories:** [Acute Phase Biomarkers](#), [Proteins](#)



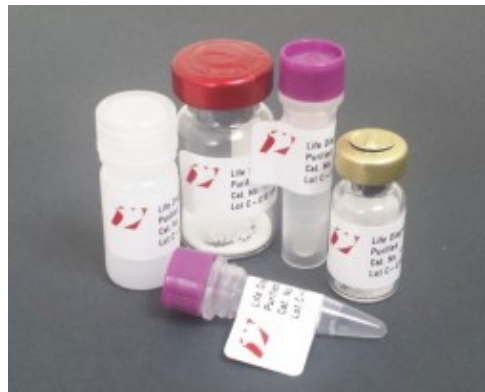
## COW LRG1, 9040

The polypeptide chain of cow LRG1 (leucine rich alpha 2 glycoprotein-1) has...

**SKU:** 9040

**Price:** \$250.00 - \$2,000.00

**Categories:** [Acute Phase Biomarkers](#), [Proteins](#)



## DOG LRG1, 9030

The polypeptide chain of dog LRG1 (leucine rich alpha 2 glycoprotein-1) has...

**SKU:** 9030

**Price:** \$250.00 - \$2,000.00

**Categories:** [Acute Phase Biomarkers](#), [Proteins](#)



## HUMAN SERUM AMYLOID A, 9006

Serum amyloid A (SAA) is a positive acute phase reactant that is synthesized...

**SKU:** 9006

**Price:** \$500.00 - \$2,000.00

**Categories:** [Acute Phase Biomarkers](#), [Proteins](#)



### MOUSE LIVER FABP, 20110

Liver fatty acid-binding protein (FABP) is a small cytosolic protein that is...

**SKU:** 20110

**Price:** \$200.00 – \$1,500.00

**Categories:** [Liver Biomarkers](#), [Proteins](#)



### DOG SERUM AMYLOID A (SAA), 9005

Serum amyloid A (SAA) is a positive acute phase reactant that is synthesized...

**SKU:** 9005

**Price:** \$500.00 – \$2,000.00

**Categories:** [Acute Phase Biomarkers](#), [Proteins](#)



### SHEEP C-REACTIVE PROTEIN (CRP), 8107

CRP is a positive acute phase reactant present in blood that is expressed in...

**SKU:** 8107

**Price:** \$220.00 – \$880.00

**Categories:** [Acute Phase Biomarkers](#), [Proteins](#)



### GOAT C-REACTIVE PROTEIN (CRP), 8106

CRP is a positive acute phase reactant present in blood that is expressed in...

**SKU:** 8106

**Price:** \$220.00 – \$880.00

**Categories:** [Acute Phase Biomarkers](#), [Proteins](#)



### CAT SERUM AMYLOID A (SAA), 9004

Serum amyloid A (SAA) is a positive acute phase reactant that is synthesized...

**SKU:** 9004

**Price:** \$250.00 – \$1,000.00

**Categories:** [Acute Phase Biomarkers](#), [Proteins](#)



### HORSE SERUM AMYLOID A (SAA), 9003

Serum amyloid A (SAA) is a positive acute phase reactant that is synthesized...

**SKU:** 9003

**Price:** \$250.00 – \$1,000.00

**Categories:** [Acute Phase Biomarkers](#), [Proteins](#)



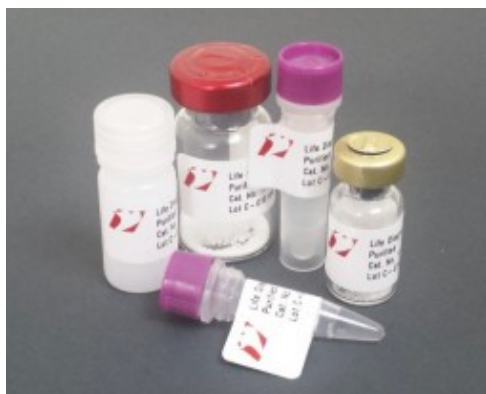
### COW C-REACTIVE PROTEIN, 8105

CRP is a positive acute phase reactant present in blood that is expressed in...

**SKU:** 8105

**Price:** \$220.00 - \$880.00

**Categories:** [Acute Phase Biomarkers](#), [Proteins](#)



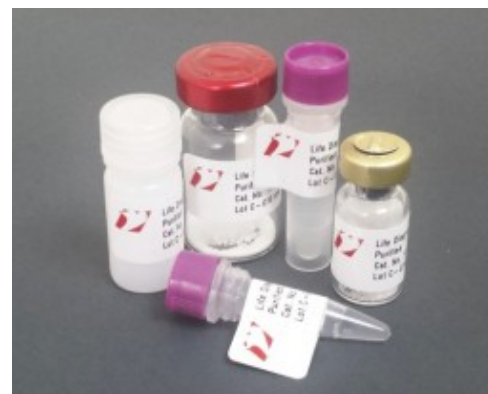
### CAT C-REACTIVE PROTEIN, 8104

CRP is a positive acute phase reactant present in blood that is expressed in...

**SKU:** 8104

**Price:** \$220.00 - \$880.00

**Categories:** [Acute Phase Biomarkers](#), [Proteins](#)



### RABBIT HAPTOGLOBIN, 8175

Haptoglobin is a serum protein that consists of two alpha and two beta...

**SKU:** N/A

**Price:** \$220.00 - \$880.00

**Categories:** [Acute Phase Biomarkers](#), [Proteins](#)



### HORSE HAPTOGLOBIN (LYOPHILIZED), 8150-L

Haptoglobin is a serum protein that consists of two alpha and two beta...

**SKU:** 8150-L

**Price:** \$300.00 - \$1,200.00

**Categories:** [Acute Phase Biomarkers](#), [Proteins](#)



### BOVINE SKELETAL MUSCLE TROPONIN-I, 3310

Troponin I (TnI) is one of three subunits that form the troponin complex of...

**SKU:** 3310

**Price:** \$150.00 - \$770.00

**Categories:** [Proteins](#), [Skeletal Muscle Biomarkers](#)



### CHICKEN SKELETAL MUSCLE TROPONIN-I, 3610

Troponin I (TnI) is one of three subunits that form the troponin complex of...

**SKU:** 3610

**Price:** \$150.00 - \$770.00

**Categories:** [Proteins](#), [Skeletal Muscle Biomarkers](#)



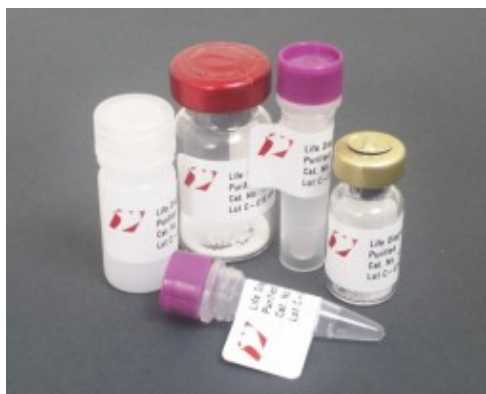
### HUMAN SKELETAL MUSCLE TROPONIN-I, 3210

Troponin I (TnI) is one of three subunits that form the troponin complex of...

**SKU:** 3210

**Price:** \$150.00 - \$770.00

**Categories:** [Proteins](#), [Skeletal Muscle Biomarkers](#)



### MONKEY SKELETAL MUSCLE TROPONIN-I, 3611

Troponin I (TnI) is one of three subunits that form the troponin complex of...

**SKU:** 3611

**Price:** \$300.00 - \$1,440.00

**Categories:** [Proteins](#), [Skeletal Muscle Biomarkers](#)



### MOUSE CREATINE KINASE MM, 1800-1

Creatine kinase (CK) is a key metabolic enzyme. It is a dimer of two...

**SKU:** 1800-1

**Price:** \$200.00 - \$1,000.00

**Categories:** [Proteins](#), [Skeletal Muscle Biomarkers](#)



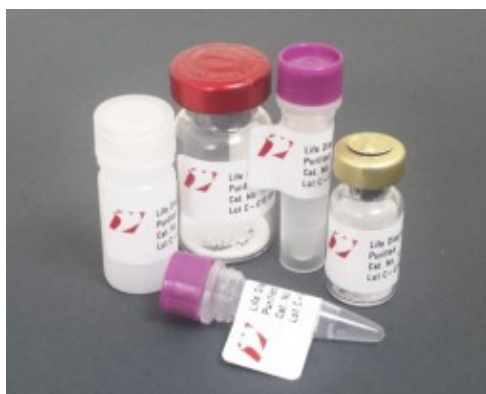
### PIG CREATINE KINASE MM, 1800-3

Creatine kinase (CK) is a key metabolic enzyme. It is a dimer of two...

**SKU:** 1800-3

**Price:** \$200.00 - \$1,000.00

**Categories:** [Proteins](#), [Skeletal Muscle Biomarkers](#)



### PIG SKELETAL MUSCLE TROPONIN-I, 3510

Troponin I (TnI) is one of three subunits that form the troponin complex of...

**SKU:** 3510

**Price:** \$150.00 - \$770.00

**Categories:** [Proteins](#), [Skeletal Muscle Biomarkers](#)



### RAT CREATINE KINASE MM, 1800-2

Creatine kinase (CK) is a key metabolic enzyme. It is a dimer of two...

**SKU:** 1800-2

**Price:** \$200.00 - \$1,000.00

**Categories:** [Proteins](#), [Skeletal Muscle Biomarkers](#)



### RAT SKELETAL MUSCLE TROPONIN-I, 3102

Troponin I (TnI) is one of three subunits that form the troponin complex of...

**SKU:** 3102

**Price:** \$400.00 - \$1,800.00

**Categories:** [Proteins](#), [Skeletal Muscle Biomarkers](#)



### SHEEP SKELETAL MUSCLE TROPONIN-I, 3410

Troponin I (TnI) is one of three subunits that form the troponin complex of...

**SKU:** 3410

**Price:** \$150.00 - \$770.00

**Categories:** [Proteins](#), [Skeletal Muscle Biomarkers](#)



### BOVINE HAPTOGLOBIN, 8010

Haptoglobin is a serum protein that consists of two alpha and two beta...

**SKU:** 8010

**Price:** \$500.00 - \$2,000.00

**Categories:** [Acute Phase Biomarkers](#), [Proteins](#)



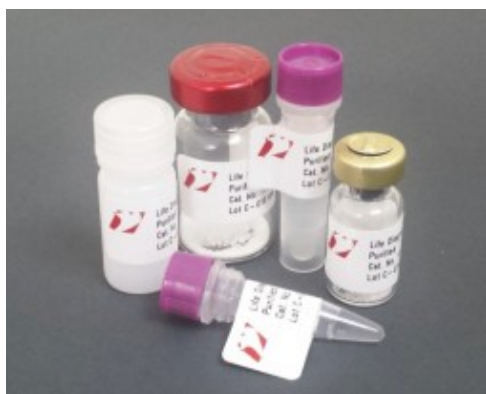
### DOG CRP, 8101

CRP is a positive acute phase reactant present in blood that is expressed in...

**SKU:** 8101

**Price:** \$220.00 - \$25,000.00

**Categories:** [Acute Phase Biomarkers](#), [Proteins](#)



### HUMAN C-REACTIVE PROTEIN, 8000

CRP is a positive acute phase reactant present in blood that is expressed in...

**SKU:** 8000

**Price:** \$160.00 - \$1,400.00

**Categories:** [Acute Phase Biomarkers](#), [Proteins](#)



### MONKEY CRP, 8103

CRP is a pentameric protein comprised of five identical ~ 25 kDa polypeptide...

**SKU:** 8103

**Price:** \$500.00 - \$2,000.00

**Categories:** [Acute Phase Biomarkers](#), [Proteins](#)



### MOUSE ALPHA-MACROGLOBULIN, 8610

Mouse alpha-macroglobulin is a serum protease inhibitor that consists of two...

**SKU:** 8610

**Price:** \$220.00 - \$880.00

**Categories:** [Acute Phase Biomarkers](#), [Proteins](#)



### MOUSE HEMOPEXIN, 8710

Mouse hemopexin is a serum protein of ~50 kDa. It functions as a heme...

**SKU:** 8710

**Price:** \$220.00 - \$880.00

**Categories:** [Acute Phase Biomarkers](#), [Proteins](#)



### RABBIT CRP, 8102

CRP is a positive acute phase reactant present in blood that is expressed in...

**SKU:** 8102

**Price:** \$400.00 - \$1,600.00

**Categories:** [Acute Phase Biomarkers](#), [Proteins](#)



### RAT ALPHA-2-MACROGLOBULIN, 8511

Rat alpha-2--macroglobulin is a tetrameric serum protein with a monomer...

**SKU:** 8511

**Price:** \$300.00 - \$1,200.00

**Categories:** [Acute Phase Biomarkers](#), [Proteins](#)



### RAT C-REACTIVE PROTEIN, 8100

CRP is a positive acute phase reactant present in blood that is expressed in...

**SKU:** 8100

**Price:** \$220.00 - \$880.00

**Categories:** [Acute Phase Biomarkers](#), [Proteins](#)



### RAT MURINOglobULIN, 8510

Rat murinoglobulin (also known as  $\alpha$ 1-inhibitor III) is a monomeric serum...

**SKU:** 8510

**Price:** \$220.00 - \$880.00

**Categories:** [Acute Phase Biomarkers](#), [Proteins](#)





### **DOG CARDIAC TROPONIN-I, 7310**

Troponin-I is a primary biomarker for evaluation of cardiac damage. It is...

**SKU:** 7310

**Price:** \$250.00 - \$1,750.00

**Categories:** [Cardiac Biomarkers](#), [Proteins](#)



### **HUMAN CARDIAC TROPONIN I, 1210**

Troponin-I is a primary biomarker for evaluation of cardiac damage. It is...

**SKU:** 1210

**Price:** \$200.00 - \$1,000.00

**Categories:** [Cardiac Biomarkers](#), [Proteins](#)



### **HUMAN CARDIAC TROPONIN-I, RECOMBINANT, 1220**

Troponin-I is a primary biomarker for evaluation of cardiac damage....

**SKU:** 1220

**Price:** \$200.00 - \$1,000.00

**Categories:** [Cardiac Biomarkers](#), [Proteins](#)



### **MOUSE CARDIAC TROPONIN I, 7110**

Troponin-I is a primary biomarker for evaluation of cardiac damage. It is...

**SKU:** 7110

**Price:** \$308.00 - \$2,200.00

**Categories:** [Cardiac Biomarkers](#), [Proteins](#)



### **PIG CARDIAC TROPONIN I, 7410**

Troponin-I is a primary biomarker for evaluation of cardiac damage. It is...

**SKU:** 7410

**Price:** \$150.00 - \$770.00

**Categories:** [Cardiac Biomarkers](#), [Proteins](#)



### **RABBIT CARDIAC TROPONIN I, 7210**

Troponin-I is a primary biomarker for evaluation of cardiac damage. It is...

**SKU:** 7210

**Price:** \$250.00 - \$1,750.00

**Categories:** [Cardiac Biomarkers](#), [Proteins](#)



### RAT CARDIAC TROPONIN I, 7010

Troponin-I is a primary biomarker for evaluation of cardiac damage. It is...

**SKU:** 7010

**Price:** \$308.00 - \$2,200.00

**Categories:** [Cardiac Biomarkers](#), [Proteins](#)



### BOVINE (COW) ALPHA-1-ACID GLYCOPROTEIN, 8340

Alpha-1-Acid glycoprotein (A1AGP) is one of the most acidic proteins found...

**SKU:** 8340

**Price:** \$220.00 - \$880.00

**Categories:** [Acute Phase Biomarkers](#), [Proteins](#)



### CAT ALPHA-1-ACID GLYCOPROTEIN, 8330

Alpha-1-Acid glycoprotein (A1AGP) is one of the most acidic proteins found...

**SKU:** 8330

**Price:** \$220.00 - \$880.00

**Categories:** [Acute Phase Biomarkers](#), [Proteins](#)



### CAT HAPTOGLOBIN, 8160

Haptoglobin is a serum protein that consists of two alpha and two beta...

**SKU:** 8160

**Price:** \$220.00 - \$880.00

**Categories:** [Acute Phase Biomarkers](#), [Proteins](#)



### DOG ALPHA-1-ACID GLYCOPROTEIN, 8320

Alpha-1-Acid glycoprotein (A1AGP) is one of the most acidic proteins found...

**SKU:** 8320

**Price:** \$220.00 - \$880.00

**Categories:** [Acute Phase Biomarkers](#), [Proteins](#)



### DOG HAPTOGLOBIN, 8120

Haptoglobin is a serum protein that consists of two alpha and two beta...

**SKU:** 8120

**Price:** \$220.00 - \$880.00

**Categories:** [Acute Phase Biomarkers](#), [Proteins](#)





### HORSE HAPTOGLOBIN, 8150

Haptoglobin is a serum protein that consists of two alpha and two beta...

**SKU:** 8150

**Price:** \$275.00 - \$1,100.00

**Categories:** [Acute Phase Biomarkers](#), [Proteins](#)



### MONKEY HAPTOGLOBIN, 8170

Haptoglobin is a serum protein that consists of two alpha and two beta...

**SKU:** 8170

**Price:** \$300.00 - \$1,200.00

**Categories:** [Acute Phase Biomarkers](#), [Proteins](#)



### MOUSE ALPHA-1-ACID GLYCOPROTEIN, 8300

Alpha-1-Acid glycoprotein (A1AGP or AGP) is one of the most acidic proteins...

**SKU:** 8300

**Price:** \$220.00 - \$880.00

**Categories:** [Acute Phase Biomarkers](#), [Proteins](#)



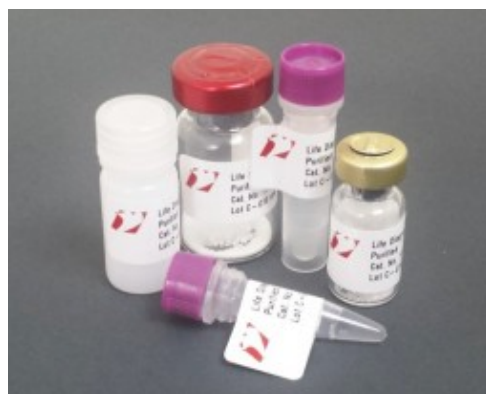
### MOUSE HAPTOGLOBIN, 8140

Haptoglobin is a serum protein that consists of two alpha and two beta...

**SKU:** 8140

**Price:** \$220.00 - \$880.00

**Categories:** [Acute Phase Biomarkers](#), [Proteins](#)



### PIG HAPTOGLOBIN, 8130

Haptoglobin is a serum protein that consists of two alpha and two beta...

**SKU:** 8130

**Price:** \$220.00 - \$880.00

**Categories:** [Acute Phase Biomarkers](#), [Proteins](#)



### RAT A-1-ACID GLYCOPROTEIN, 8310

Alpha-1-Acid glycoprotein (A1AGP) is one of the most acidic proteins found...

**SKU:** 8310

**Price:** \$220.00 - \$880.00

**Categories:** [Acute Phase Biomarkers](#), [Proteins](#)



### RAT HAPTOGLOBIN, 8110

Haptoglobin is a serum protein that consists of two alpha and two beta...

**SKU:** 8110

**Price:** \$220.00 - \$880.00

**Categories:** [Acute Phase Biomarkers](#), [Proteins](#)



### BOVINE CARDIAC TROPONIN I, 7510

Troponin-I is a primary biomarker for evaluation of cardiac damage. It is...

**SKU:** 7510

**Price:** \$150.00 - \$770.00

**Categories:** [Cardiac Biomarkers](#), [Proteins](#)



### COW CARDIAC MYOGLOBIN, 7620

Myoglobin is a heme containing protein that serves as an intracellular...

**SKU:** 7620

**Price:** \$220.00 - \$825.00

**Categories:** [Cardiac Biomarkers](#), [Proteins](#)



### DOG CARDIAC MYOGLOBIN, 7320

Myoglobin is a heme containing protein that serves as an intracellular...

**SKU:** 7320

**Price:** \$220.00 - \$825.00

**Categories:** [Cardiac Biomarkers](#), [Proteins](#)



### DOG CARDIAC TROPOMYOSIN, 7943

Tropomyosin regulates the interaction between actin and myosin in skeletal...

**SKU:** 7943

**Price:** \$350.00 - \$2,500.00

**Categories:** [Cardiac Biomarkers](#), [Proteins](#)



### GUINEA PIG CARDIAC MYOGLOBIN, 7921

Myoglobin is a heme containing protein that serves as an intracellular...

**SKU:** 7921

**Price:** \$300.00 - \$1,200.00

**Categories:** [Cardiac Biomarkers](#), [Proteins](#)



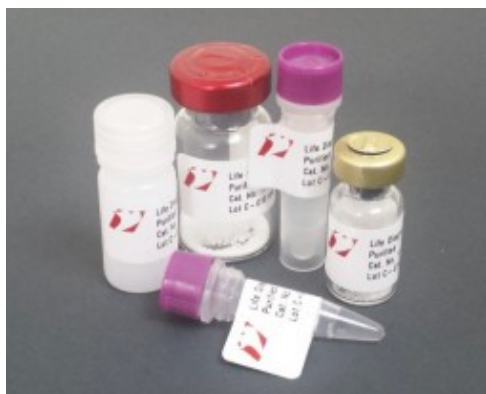
### GUINEA PIG CARDIAC TROPONIN-I, 7710

Troponin-I is a primary biomarker for evaluation of cardiac damage. It is...

**SKU:** 7710

**Price:** \$308.00 - \$2,200.00

**Categories:** [Cardiac Biomarkers](#), [Proteins](#)



### HUMAN CARDIAC FABP, 1610

Fatty-acid-binding proteins (FABPs) transport fatty acids and other...

**SKU:** 1610

**Price:** \$175.00 - \$850.00

**Categories:** [Cardiac Biomarkers](#), [Proteins](#)



### HUMAN CARDIAC MYOGLOBIN, 1510

Myoglobin is a heme containing protein that serves as an intracellular...

**SKU:** 1510

**Price:** \$110.00 - \$412.50

**Categories:** [Cardiac Biomarkers](#), [Proteins](#)



### HUMAN CARDIAC TROPONIN C, 1305

Troponin-C is the calcium sensor of the troponin ITC complex that serves as...

**SKU:** 1305

**Price:** \$150.00 - \$770.00

**Categories:** [Cardiac Biomarkers](#), [Proteins](#)



### HUMAN CARDIAC TROPONIN-T, 1110

Troponin-T is a biomarker for evaluation of cardiac damage. It is purified...

**SKU:** 1110

**Price:** \$200.00 - \$1,000.00

**Categories:** [Cardiac Biomarkers](#), [Proteins](#)



### MONKEY CARDIAC FABP, 7932

Fatty-acid-binding proteins (FABPs) transport fatty acids and other...

**SKU:** 7932

**Price:** \$330.00 - \$550.00

**Categories:** [Cardiac Biomarkers](#), [Proteins](#)



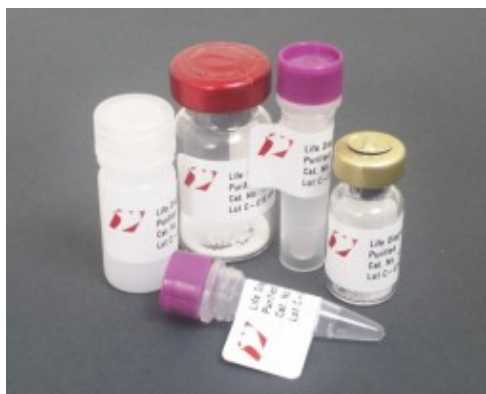
### MONKEY CARDIAC MYOGLOBIN, 7920

Myoglobin is a heme containing protein that serves as an intracellular...

**SKU:** 7920

**Price:** \$300.00 - \$1,200.00

**Categories:** [Cardiac Biomarkers](#), [Proteins](#)



### MONKEY CARDIAC TROPONIN I, 7610

Troponin-I is a primary biomarker for evaluation of cardiac damage. It is...

**SKU:** 7610

**Price:** \$350.00 - \$2,500.00

**Categories:** [Cardiac Biomarkers](#), [Proteins](#)



### MOUSE CARDIAC FABP, 7931

Fatty-acid-binding proteins (FABPs) transport fatty acids and other...

**SKU:** 7931

**Price:** \$275.00 - \$440.00

**Categories:** [Cardiac Biomarkers](#), [Proteins](#)



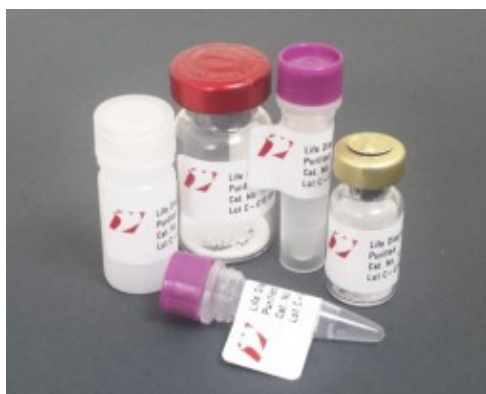
### MOUSE CARDIAC MYOGLOBIN, 7820

Myoglobin is a heme containing protein that serves as an intracellular...

**SKU:** 7820

**Price:** \$220.00 - \$825.00

**Categories:** [Cardiac Biomarkers](#), [Proteins](#)



### PIG CARDIAC MYOGLOBIN, 7420

Myoglobin is a heme containing protein that serves as an intracellular...

**SKU:** 7420

**Price:** \$220.00 - \$825.00

**Categories:** [Cardiac Biomarkers](#), [Proteins](#)



### PIG CARDIAC TROPONIN COMPLEX, 70004

Troponin complex serves as part of the calcium sensitive trigger mechanism...

**SKU:** 70004

**Price:** \$350.00 - \$2,500.00

**Categories:** [Cardiac Biomarkers](#), [Proteins](#)



### RABBIT CARDIAC MYOGLOBIN, 7720

Myoglobin is a heme containing protein that serves as an intracellular...

**SKU:** 7720

**Price:** \$220.00 - \$825.00

**Categories:** [Cardiac Biomarkers](#), [Proteins](#)



### RABBIT CARDIAC TROPONIN COMPLEX, 70003

Troponin complex serves as part of the calcium sensitive trigger mechanism...

**SKU:** 70003

**Price:** \$350.00 - \$2,500.00

**Categories:** [Cardiac Biomarkers](#), [Proteins](#)



### RAT CARDIAC FABP, 7930

Fatty-acid-binding proteins (FABPs) transport fatty acids and other...

**SKU:** 7930

**Price:** \$275.00 - \$440.00

**Categories:** [Cardiac Biomarkers](#), [Proteins](#)



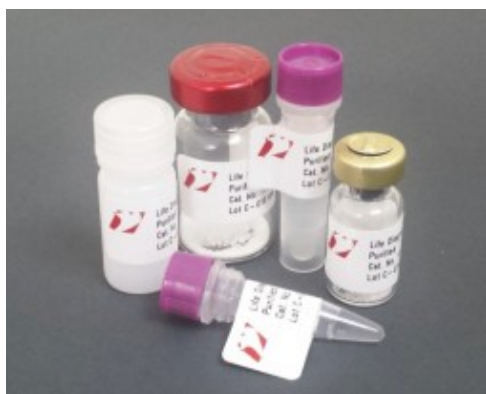
### RAT CARDIAC MYOGLOBIN, 7520

Myoglobin is a heme containing protein that serves as an intracellular...

**SKU:** 7520

**Price:** \$220.00 - \$825.00

**Categories:** [Cardiac Biomarkers](#), [Proteins](#)



### RAT CARDIAC TROPOMYOSIN, 7942

Tropomyosin regulates the interaction between actin and myosin in skeletal...

**SKU:** 7942

**Price:** \$350.00 - \$2,500.00

**Categories:** [Cardiac Biomarkers](#), [Proteins](#)



### DOG CRP, LYOPHILIZED (1 MG), 8101-L

CRP is a positive acute phase reactant present in blood that is expressed in...

**SKU:** 8101-L

**Price:** \$880.00

**Categories:** [Acute Phase Biomarkers](#), [Proteins](#)



### MOUSE CERULOPLASMIN, 8400

Mouse ceruloplasmin is a ~120 kDa monomeric serum protein that functions as...

**SKU:** 8400

**Price:** \$220.00 - \$880.00

**Categories:** [Acute Phase Biomarkers](#), [Proteins](#)



### PIG A-1-ACID GLYCOPROTEIN, 8350

Alpha-1-Acid glycoprotein (A1AGP) is one of the most acidic proteins found...

**SKU:** 8350

**Price:** \$220.00 - \$880.00

**Categories:** [Acute Phase Biomarkers](#), [Proteins](#)



### RABBIT A-1-ACID GLYCOPROTEIN, 8356

a-1-Acid glycoprotein (A1AGP) is one of the most acidic proteins found in...

**SKU:** 8356

**Price:** \$440.00 - \$1,760.00

**Categories:** [Acute Phase Biomarkers](#), [Proteins](#)



### RAT CERULOPLASMIN, 8410

Rat ceruloplasmin is a ~120 kDa monomeric serum protein that functions as a...

**SKU:** 8410

**Price:** \$220.00 - \$880.00

**Categories:** [Acute Phase Biomarkers](#), [Proteins](#)



### RAT HEMOPEXIN, 8720

Rat hemopexin is a serum protein of ~51 kDa. It functions as a heme...

**SKU:** 8720

**Price:** \$220.00 - \$880.00

**Categories:** [Acute Phase Biomarkers](#), [Proteins](#)



### TURKEY A-1-ACID GLYCOPROTEIN, 8355

Alpha-1-Acid glycoprotein (A1AGP) is one of the most acidic proteins found...

**SKU:** 8355

**Price:** \$220.00 - \$880.00

**Categories:** [Acute Phase Biomarkers](#), [Proteins](#)





### DOG CARDIAC FABP, 7934

Fatty-acid-binding proteins (FABPs) transport fatty acids and other...

**SKU:** 7934

**Price:** \$275.00 - \$440.00

**Categories:** [Cardiac Biomarkers](#), [Proteins](#)



### GUINEA PIG CARDIAC FABP, 7936

Fatty-acid-binding proteins (FABPs) transport fatty acids and other...

**SKU:** 7936

**Price:** \$330.00 - \$550.00

**Categories:** [Cardiac Biomarkers](#), [Proteins](#)



### HUMAN CARDIAC TROPOMYOSIN, 1710

Tropomyosin regulates the interaction between actin and myosin in skeletal...

**SKU:** 1710

**Price:** \$175.00 - \$850.00

**Categories:** [Cardiac Biomarkers](#), [Proteins](#)



### PIG CARDIAC FABP, 7935

Fatty-acid-binding proteins (FABPs) transport fatty acids and other...

**SKU:** 7935

**Price:** \$150.00 - \$770.00

**Categories:** [Cardiac Biomarkers](#), [Proteins](#)



### RABBIT CARDIAC FABP, 7933

Fatty-acid-binding proteins (FABPs) transport fatty acids and other...

**SKU:** 7933

**Price:** \$275.00 - \$440.00

**Categories:** [Cardiac Biomarkers](#), [Proteins](#)



### MOUSE SKELETAL MUSCLE TROPONIN-I, 3101

Troponin I (TnI) is one of three subunits that form the troponin complex of...

**SKU:** 3101

**Price:** \$400.00 - \$1,800.00

**Categories:** [Proteins](#), [Skeletal Muscle Biomarkers](#)



### RABBIT SKELETAL MUSCLE TROPONIN ITC COMPLEX, 4030

Troponin is a complex of three subunits, troponin-C, troponin-I and...

**SKU:** 4030

**Price:** \$200.00 - \$1,000.00

**Categories:** [Proteins](#), [Skeletal Muscle Biomarkers](#)



### RABBIT SKELETAL MUSCLE TROPONIN-C, 3010

Troponin-C is one of three subunits that form the troponin complex of the...

**SKU:** 3010

**Price:** \$150.00 - \$600.00

**Categories:** [Proteins](#), [Skeletal Muscle Biomarkers](#)



### RABBIT SKELETAL MUSCLE TROPONIN-I, 3110

Troponin I (TnI) is one of three subunits that form the troponin complex of...

**SKU:** 3110

**Price:** \$150.00 - \$770.00

**Categories:** [Proteins](#), [Skeletal Muscle Biomarkers](#)



### RAT GC-GLOBULIN, 20220

Rat liver Vitamin-D binding protein (Gc-globulin) has been identified as a...

**SKU:** 20220

**Price:** \$200.00 - \$1,500.00

**Categories:** [Liver Biomarkers](#), [Proteins](#)



### RAT LIVER FABP, 20120

Liver fatty acid-binding protein (FABP) is a small cytosolic protein that is...

**SKU:** 20120

**Price:** \$200.00 - \$1,500.00

**Categories:** [Liver Biomarkers](#), [Proteins](#)



### RAT THIOSTATIN, 8820

Rat thiostatin, is a serum protein with an apparent molecular weight of ~70...

**SKU:** 8820

**Price:** \$440.00 - \$1,760.00

**Categories:** [Acute Phase Biomarkers](#), [Proteins](#)



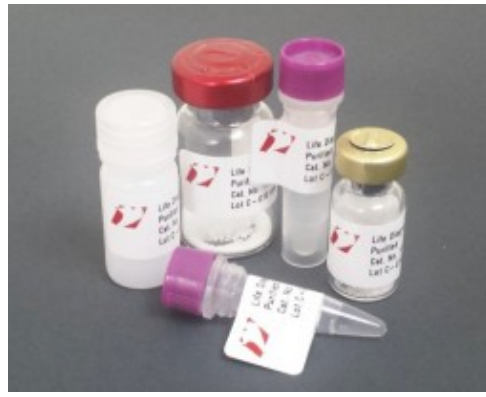
### MONKEY IGG, 30001-4

Purified from Rhesus or Cynomolgus monkey serum using affinity and...

**SKU:** 30001-4

**Price:** \$100.00 - \$500.00

**Categories:** [Immunoglobulins](#), [Proteins](#)



### MONKEY IGM, 30000-4

Purified at from monkey serum (Rhesus or Cynomolgus) using size exclusion...

**SKU:** 30000-4

**Price:** \$150.00 - \$1,000.00

**Categories:** [Immunoglobulins](#), [Proteins](#)



### PIG IGG, 30001-5

Purified from pig serum using a combination of affinity and size exclusion...

**SKU:** 30001-5

**Price:** \$150.00 - \$800.00

**Categories:** [Immunoglobulins](#), [Proteins](#)



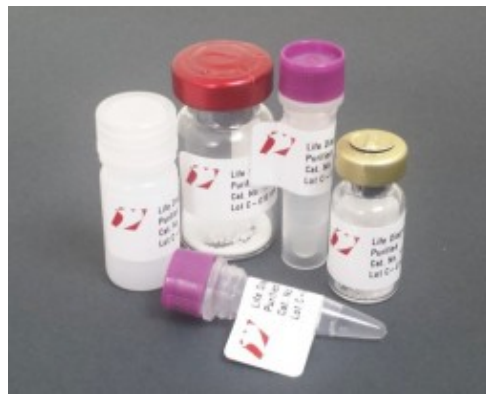
### PIG IGM, 30000-5

Purified from pig serum using size exclusion chromatography.

**SKU:** 30000-5

**Price:** \$150.00 - \$1,000.00

**Categories:** [Immunoglobulins](#), [Proteins](#)



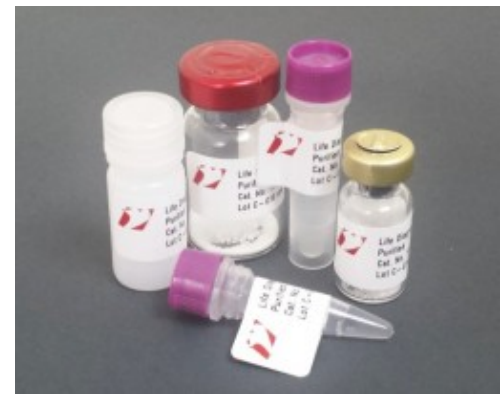
### RAT IGA, 30002-2

Purified at Life Diagnostics from rat serum using a combination of affinity...

**SKU:** 30002-2

**Price:** \$150.00 - \$1,000.00

**Categories:** [Immunoglobulins](#), [Proteins](#)



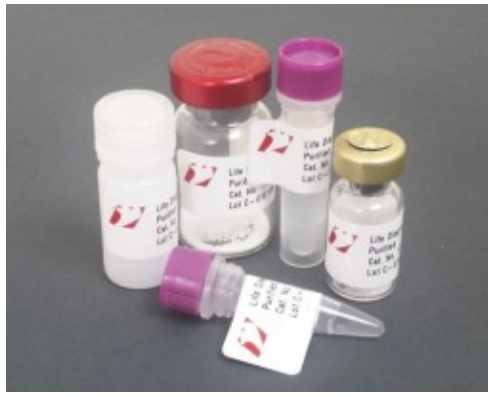
### TURKEY IGM, 30000-6

Purified at from turkey serum using size exclusion chromatography.

**SKU:** 30000-6

**Price:** \$150.00 - \$1,000.00

**Categories:** [Immunoglobulins](#), [Proteins](#)



### **MONKEY IGA, 30002-4**

Purified from Rhesus or Cynomolgus monkey serum using a combination of...

**SKU:** 30002-4

**Price:** \$150.00 - \$1,000.00

**Categories:** [Immunoglobulins](#), [Proteins](#)

## INDEX

### B

Bovine (Cow) alpha-1-acid glycoprotein, 8340 8  
Bovine Cardiac Troponin I, 7510 10  
Bovine Haptoglobin, 8010 5  
Bovine Skeletal Muscle Troponin-I, 3310 3

### C

Cat alpha-1-acid glycoprotein, 8330 8  
Cat C-Reactive Protein, 8104 3  
Cat Haptoglobin, 8160 8  
Cat LRG1 (100 ug), 9060 1  
Cat Serum Amyloid A (SAA), 9004 2  
Chicken Skeletal Muscle Troponin-I, 3610 3  
Cow C-Reactive Protein, 8105 3  
Cow Cardiac Myoglobin, 7620 10  
Cow LRG1, 9040 1  
Cow Serum Amyloid A, 9007 1

### D

Dog alpha-1-acid glycoprotein, 8320 8  
Dog Cardiac FABP, 7934 15  
Dog Cardiac Myoglobin, 7320 10  
Dog Cardiac Tropomyosin, 7943 10  
Dog Cardiac Troponin-I, 7310 7  
Dog CRP, 8101 5  
Dog CRP, Lyophilized (1 mg), 8101-L 13  
Dog Haptoglobin, 8120 8  
Dog LRG1, 9030 1  
Dog Serum Amyloid A (SAA), 9005 2

### G

Goat C-Reactive Protein (CRP), 8106 2  
Guinea Pig Cardiac FABP, 7936 15  
Guinea Pig Cardiac Myoglobin, 7921 10  
Guinea Pig Cardiac Troponin-I, 7710 11

### H

Horse Haptoglobin (Lyophilized), 8150-L 3  
Horse Haptoglobin, 8150 9  
Horse Serum Amyloid A (SAA), 9003 2  
Human C-Reactive Protein, 8000 5  
Human Cardiac FABP, 1610 11  
Human Cardiac Myoglobin, 1510 11  
Human Cardiac Tropomyosin, 1710 15  
Human Cardiac Troponin C, 1305 11  
Human Cardiac Troponin I, 1210 7  
Human Cardiac Troponin-I, Recombinant, 1220 7  
Human Cardiac Troponin-T, 1110 11  
Human LRG1, 9050 1  
Human Serum Amyloid A, 9006 1  
Human Skeletal Muscle Troponin-I, 3210 4

### M

Monkey Cardiac FABP, 7932 11  
Monkey Cardiac Myoglobin, 7920 12

Monkey Cardiac Troponin I, 7610 12  
Monkey CRP, 8103 5  
Monkey Haptoglobin, 8170 9  
Monkey IgA, 30002-4 18  
Monkey IgG, 30001-4 17  
Monkey IgM, 30000-4 17  
Monkey Skeletal Muscle Troponin-I, 3611 4  
Mouse alpha-1-acid glycoprotein, 8300 9  
Mouse Alpha-Macroglobulin, 8610 6  
Mouse Cardiac FABP, 7931 12  
Mouse Cardiac Myoglobin, 7820 12  
Mouse Cardiac Troponin I, 7110 7  
Mouse Ceruloplasmin, 8400 14  
Mouse Creatine Kinase MM, 1800-1 4  
Mouse Haptoglobin, 8140 9  
Mouse Hemopexin, 8710 6  
Mouse Liver FABP, 20110 2  
Mouse Skeletal Muscle Troponin-I, 3101 15

**P**

Pig a-1-Acid glycoprotein, 8350 14  
Pig Cardiac FABP, 7935 15  
Pig Cardiac Myoglobin, 7420 12  
Pig Cardiac Troponin Complex, 70004 12  
Pig Cardiac Troponin I, 7410 7  
Pig Creatine Kinase MM, 1800-3 4  
Pig Haptoglobin, 8130 9  
Pig IgG, 30001-5 17  
Pig IgM, 30000-5 17  
Pig Skeletal Muscle Troponin-I, 3510 4

**R**

Rabbit a-1-Acid glycoprotein, 8356 14  
Rabbit Cardiac FABP, 7933 15  
Rabbit Cardiac Myoglobin, 7720 13  
Rabbit Cardiac Troponin Complex, 70003 13  
Rabbit Cardiac Troponin I, 7210 7  
Rabbit CRP, 8102 6  
Rabbit Haptoglobin, 8175 3  
Rabbit Skeletal Muscle Troponin ITC Complex, 4030 16  
Rabbit Skeletal Muscle Troponin-C, 3010 16  
Rabbit Skeletal Muscle Troponin-I, 3110 16  
Rat a-1-Acid glycoprotein, 8310 9  
Rat Alpha-2-Macroglobulin, 8511 6  
Rat C-Reactive Protein, 8100 6  
Rat Cardiac FABP, 7930 13  
Rat Cardiac Myoglobin, 7520 13  
Rat Cardiac Tropomyosin, 7942 13  
Rat Cardiac Troponin I, 7010 8  
Rat Ceruloplasmin, 8410 14  
Rat Creatine Kinase MM, 1800-2 4  
Rat Gc-Globulin, 20220 16  
Rat Haptoglobin, 8110 10  
Rat Hemopexin, 8720 14  
Rat IgA, 30002-2 17  
Rat Liver FABP, 20120 16  
Rat Murinoglobulin, 8510 6  
Rat Skeletal Muscle Troponin-I, 3102 5  
Rat Thiostatin, 8820 16



**S**

Sheep C-Reactive Protein (CRP), 8107 2

Sheep Skeletal Muscle Troponin-I, 3410 5

**T**

Turkey  $\alpha$ -1-Acid glycoprotein, 8355 14

Turkey IgM, 30000-6 17